

our load is heavy!

properly configured

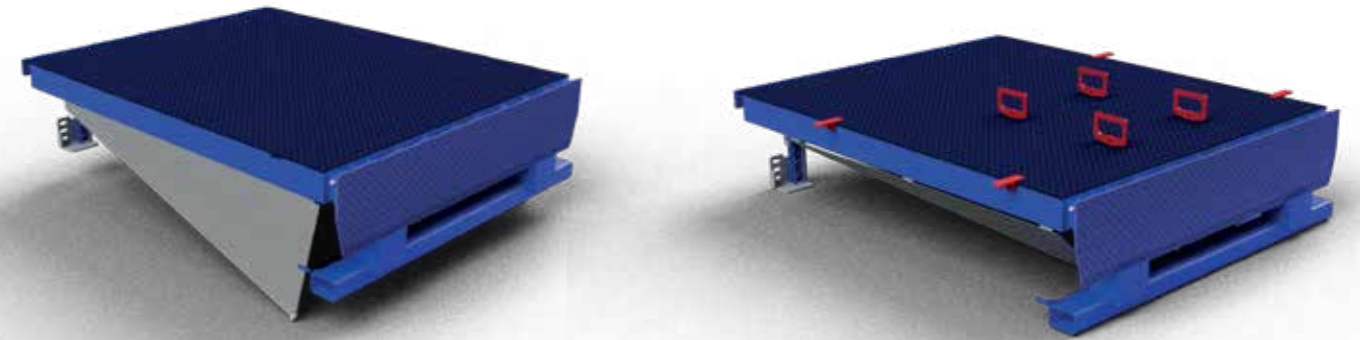
“loading systems”

make your job easier..



COMBI SWING DOCK LEVELER

*COMBI is the most competitive model
in price wise with
its ergonomic and intelligent design*



BOTTOM SUPPORTIVE BEAMS

- L shaped strong beams
- Healthy welding with inert-gas welding method



PLATFORM SHEET

- Tear-drop checkered steel sheet

FLAP SHEET

- Tear-drop checkered steel sheet

EASY TRANSPORTATION AND STOCKING

- More number of dock levelers can be transported or stocked thanks to its foldable and adjustable design

Colour Options

STANDARD- RAL 5010

OPTIONAL

All colors in the RAL Catalog for phosphorous colors.)



RUBBER BUMPERS

- Shock absorbing, long lasting rubber bumpers (large size bumper is optional)



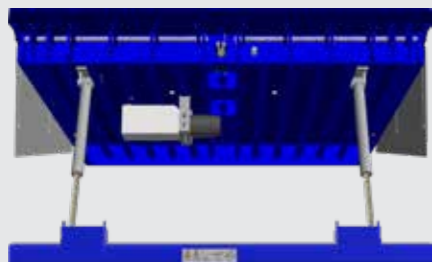
HYDRAULIC UNIT

- Italian hydraulic unit
- Capable to pull the flap back by force



DUAL PISTON (optional)

- Telescopic type anti-shearing side sheets



BACK SIDE JOINT STRUCTURE

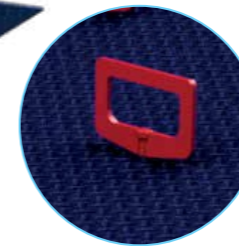
- With adjustable legs that ensures safe installation according to various pit heights

ANTI-SHEARING SIDE SHEETS

- Anti-shearing safety sheets
- Equipped with rollers that ensures noise-free and damage-free working

EASY CARRYING AND INSTALLATION

- With rotatable Ringbolts, easy and fast all around carrying



Loading Capacity

- Dynamic carrying capacity 7 - 9 - 12 - 15 Ton

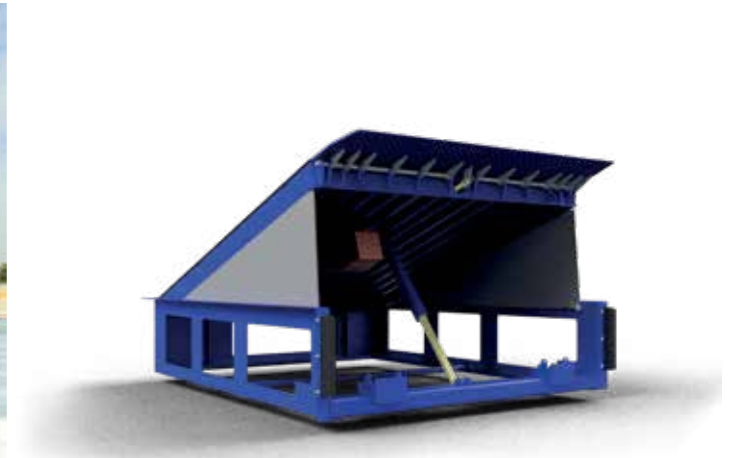
DIMENSIONS(mm)	SINGLE FLAP	THREE FLAP
Width x Depth		
1750 x 2000	✓	X
1750 x 2500	✓	X
1750 x 3000	✓	X
2000 x 2000	✓	✓
2000 x 2500	✓	✓
2000 x 3000	✓	✓
2200 x 2000	✓	✓
2200 x 2500	✓	✓
2200 x 3000	✓	✓

* Get information for custom metrics



BOX SWING DOCK LEVELER

BOX is the most competitive model among self-framed models thank to its new generation mono-block design



HYDRAULIC UNIT

- Italian hydraulic unit with 3 outputs
- Capable to pull the flap back by force

BACK SIDE JOINT STRUCTURE

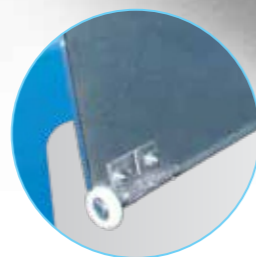
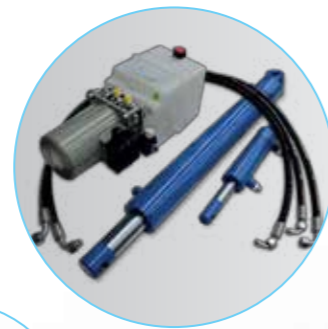
- Spreads the load to a wider surface against forklift crossings thanks to its special multi-point supportive designed joint structure

BOTTOM SUPPORTIVE BEAMS

- Flexible and seamless L shaped beams that neutralize the planar differences between the floor and the vehicle surfaces
- Healthy welding with inert-gas welding method.
- Full compliance to min. 150mm wheel width in accordance with EN 1398 international standard.

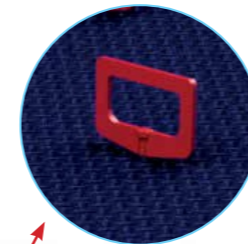
SELF SUPPORTIVE FRAMEWORK

- Suspended, embedded or detachable type unique frame designs
- Made of monolithic, laser-cut steel sheets



PLATFORM SHEET

- Tear-drop checkered steel sheet



EASY CARRYING AND INSTALLATION

- With rotatable Ringbolts, easy and fast all around carrying



SAFETY LOCK

- Platform locking arm for safe and easy maintenance

FLAP SHEET

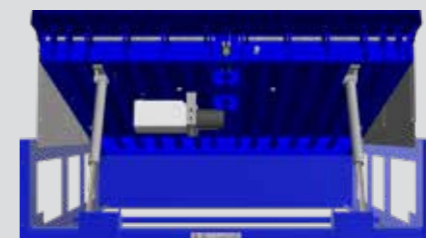
- Tear-drop checkered steel sheet

RUBBER BUMPERS

- Shock absorbing, easy replacable, long lasting rubber bumpers
- Reminds the replacement time thanks to its inner strips

DUAL PISTON (optional)

- Telescopic type anti-shearing side sheets



ANTI-SHEARING SIDE SHEETS

- Anti-shearing safety sheets
- Equipped with rollers that ensures noise-free and damage-free working

Colour Options

STANDARD- RAL 5010

OPTIONAL

All colors in the RAL Catalog for phosphorous colors.)



Loading Capacity

- Dynamic carrying capacity 7 - 9 - 12 - 15 Ton

DIMENSIONS(mm)	SINGLE FLAP	THREE FLAP
Width x Depth		
1750 x 2000	✓	X
1750 x 2500	✓	X
1750 x 3000	✓	X
2000 x 2000	✓	✓
2000 x 2500	✓	✓
2000 x 3000	✓	✓
2200 x 2000	✓	✓
2200 x 2500	✓	✓
2200 x 3000	✓	✓

* Get information for custom metrics



TELESCOP TELESCOPIC DOCK LEVELERS

*“smart solutions”
to ease your burden needs*



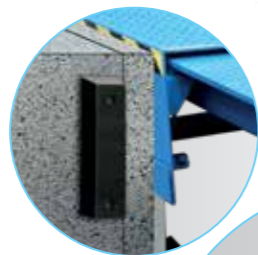
BOTTOM SUPPORTIVE BEAMS

- L shaped strong beams
- Healthy welding with inert-gas welding method.



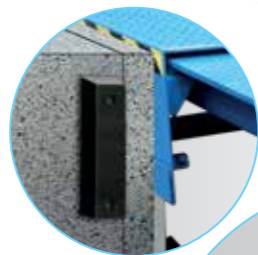
BACK SIDE JOINT STRUCTURE

- Strong fixation with welding



EXTERNAL RUBBER BUMPERS

- Shock absorbing and long lasting rubber bumpers



HYDRAULIC UNIT

- Italian hydraulic unit with safety valve against hose fracture
- Capable to pull the flap back by force

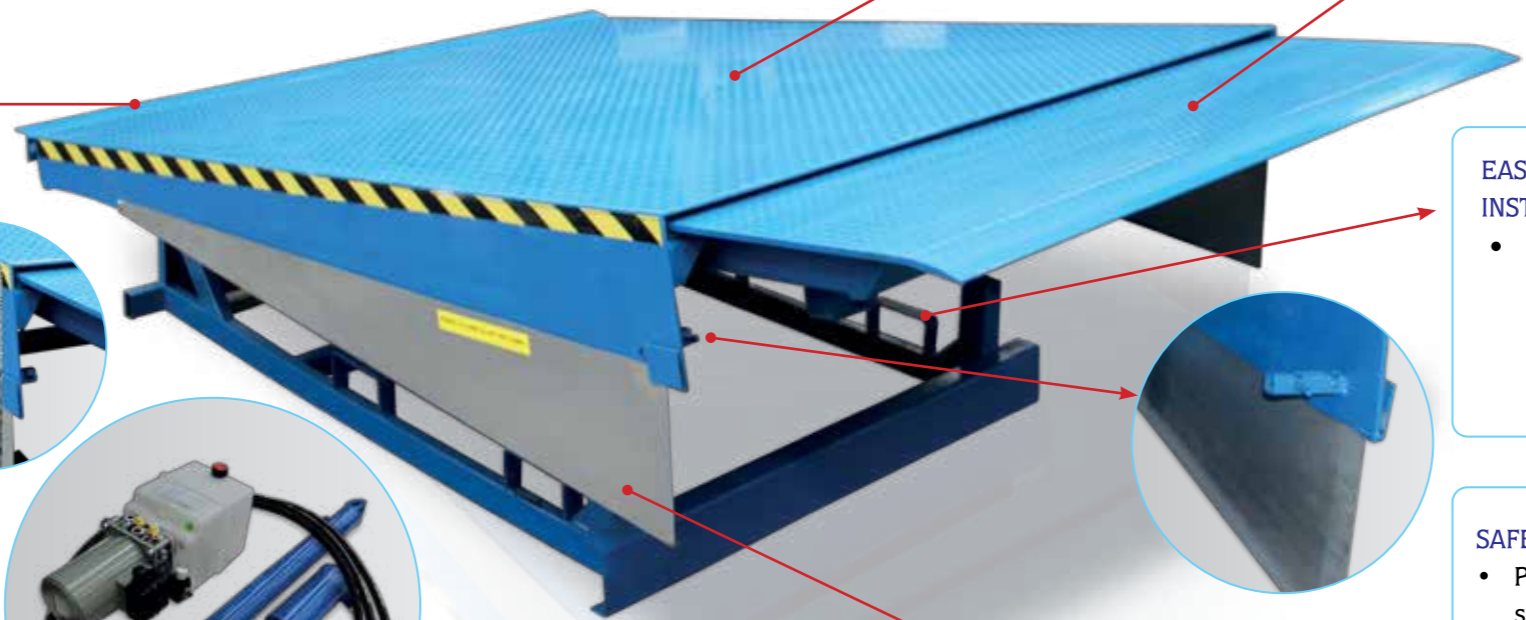


PLATFORM SHEET

- Tear-drop checkered steel sheet

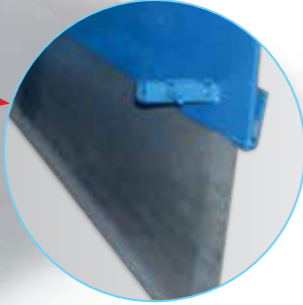
FLAP SHEET

- Tear-drop checkered steel sheet



EASY TRANSFERING DURING INSTALLATION

- Easy to carry the dock leveler thanks to its side fork holes that allows to carry the system with a forklift



SAFETY LOCK

- Platform locking arm for safe and easy maintenance

ANTI-SHEARING SIDE SHEETS

- Telescopic moving anti-shearing safety sheets

Colour Options

STANDARD- RAL 5010
OPTIONAL
All colors in the RAL
Catalog for
phosphorous colors.)



Loading Capacity

- Dynamic carrying capacity 6 - 10 - 12 - 15 Ton

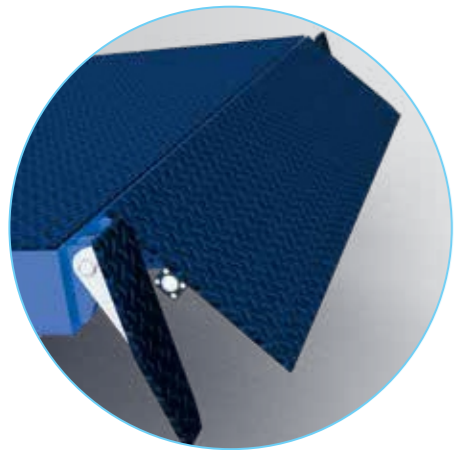
Lip Length Options

- 600 mm (standard)
- 1000 mm

DIMENSIONS(mm) Width x Depth	SINGLE FLAP
2000 x 2000	✓
2000 x 2500	✓
2000 x 3000	✓

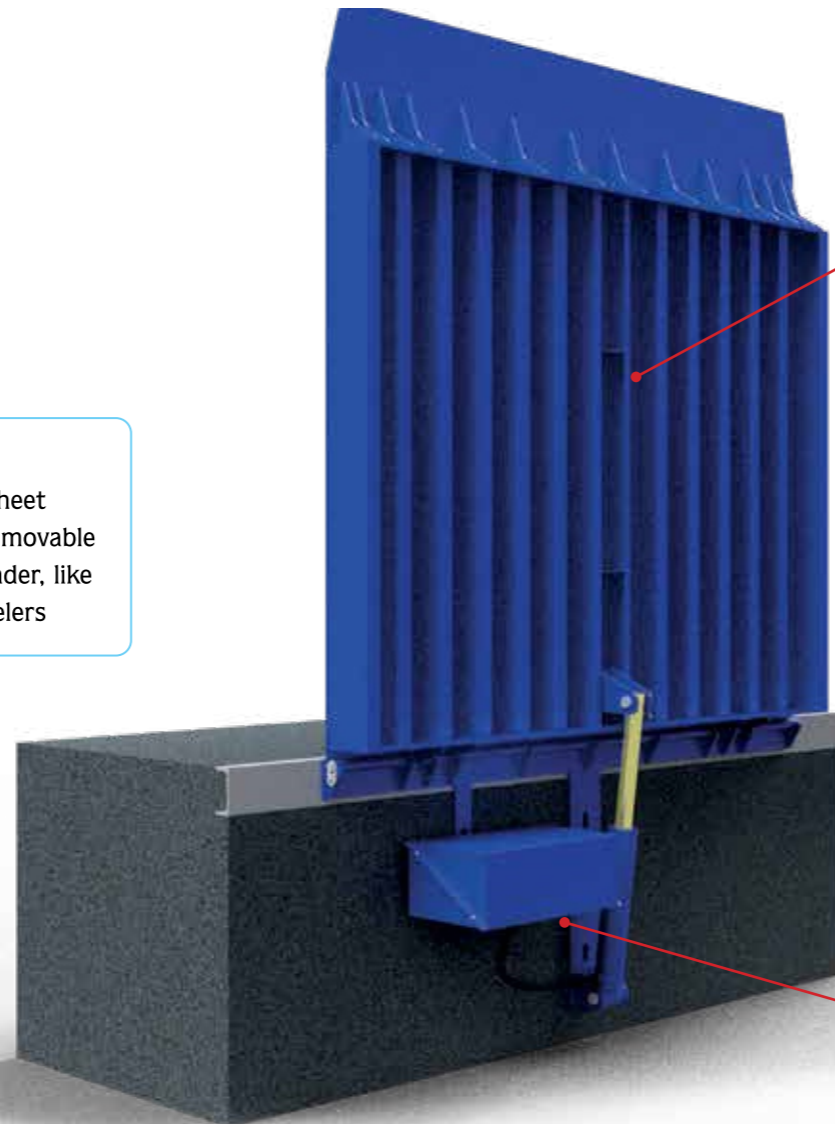
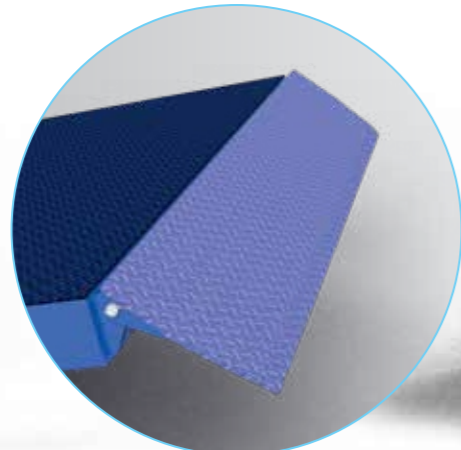
DORA
VERTICAL
DOCK LEVELER

*different “solutions”
to different needs*



PLATFORM SHEET

- Tear-drop checkered steel sheet
- Front flap can optionally be movable type with an additional cylinder, like typical pit-detailed dock levelers



SUPPORTIVE BEAMS



HYDRAULIC UNIT

- Italian hydraulic unit with safety valve against hose fracture
- Capable to pull the flap back by force



HYDRAULIC UNIT COVER BOX

Colour Options

STANDARD- RAL 5010 
OPTIONAL
All colors in the RAL
Catalog for
phosphorous colors.) 

Loading Capacity

- Dynamic carrying capacity
7 - 9 - 12 - 15 Ton

Sizes

- 1750 x 1000
- 1750 x 1500
- 1750 x 2000
- 1750 x 2500
- 2000 x 1000
- 2000 x 1500
- 2000 x 2000
- 2000 x 2500
- 2200 x 1000
- 2200 x 1500
- 2200 x 2000
- 2200 x 2500

(Please refer to Sales Dept. for special sizes)



BRIDGE MOBILE LOADING PLATFORM

*“mobile” bridges
to your loads*



FLAP

- Tear-drop checkered steel sheet with 700 mm length

FIXATION TO VEHICLE FLOOR

- Fixation to the vehicle while loading with Q8 chain

MOVEMENT WHEELS

- Rubber coated heavy duty wheels with Q2 60x70 mm

HYDRAULIC HAND PUMPS

- Easy folding with hydraulic hand pump when not in use



ABSORPTION MATERIAL

- Hot galvanized, notched grill (3x30 mm)

PLATFORM

- Tear-drop checkered steel sheet

FLAP AND TAIL MOVEMENT

- Easy movement with hydraulic hand pump

Colour Options

STANDARD- RAL 5010

OPTIONAL
All colors in the RAL
Çatalođı for
phosphorous colors.)



Loading Capacity

8 Ton - 10 Ton - 12 Ton

Dimensions

• 2.000 X 10.200 mm

Maximum Ascending - Descending Distances

• +1000 mm / +1600 mm

HHS

OTOMATİK KAPI



CERTIFICATE

This certificate is granted to the organization,

HHS OTOMATİK KAPI SANAYİ VE TİCARET LİMİTED ŞİRKETİ

Erenler Mahallesi 1210 Sokak No:12 Erenler / Sakarya / Türkiye

SHUTTER AND SHUTTER SYSTEMS, INDUSTRIAL AND HOUSEHOLD SECTIONAL DOORS, PHOTOCELL AND RADAR DOORS DESIGN, PRODUCTION, SALES AND AFTER-SALES SERVICES, HANGAR DOORS, ROLLING AND CURTAIN TYPE PVC DOOR SYSTEMS, REVOLVING DOOR, HERMETIC DOOR, 90 DEGREE OPENING DOORS, TELESCOPIC DOORS, SLIDING FOLDING DOORS, FIRE RESISTANT AND EMERGENCY ESCAPE DOORS, LOADING RAMPS AND BELLOWES, GARDEN DOOR AUTOMATION, BARRIER, PARKING LOT AUTOMATION, DOOR AUTOMATION SYSTEMS, FIRE DOOR AND WINDOW AUTOMATION IMPORT, SALES AND AFTER SALES SERVICES

EA 14, 17

according to the scope,

ISO 9001:2015

to certify that Quality Management System in accordance with standard's clauses is established and being implemented.

First Date of Issue	: 30.07.2021
Date of Issue	: 30.07.2021
Certificate Period	: 3 Years
Reissue Due Date	: 29.07.2022
Certificate No	: 01.21.9512.115029.D


First Quality Certification
System Certificate Approved
Maltepe / İstanbul / Türkiye



FOC, India & Head Office
FOC First Quality Certification Pvt. Ltd.
S03 37, Sector-12, Panchkula - 134109, Haryana, India
T: +91 172 6535975 // F: +91 172 4416931
www.fqc.com info@fqc.com

FOC, Turkey & Critical Location
FOC Uluslar Arası Belgelendirme ve Eğitim Hizmetleri A.Ş.
Cevizli Mah. Tansel Cad. No:12 Kat:4 D: 28-29 Maltepe / İstanbul / Türkiye
T: +90 216 444 21 41 / +90 216 457 69 08 F: +90 216 457 98 69
www.fqc.com.tr info@fqc.com.tr

Bu belge, müşterinin FOC'nin kurallarına ve sözleşme şartlarına uyduğu sürece geçerlidir. Sertifikanın geçerlilik durumu FOC'nin internet sitesinden takip edilir. This document shall remain valid as long as the customer obeys FOC rules and terms of the contract. Certificate validity may be checked on FOC website.



22+ years we working
for your comfort

+90 264 291 00 60
+90 264 291 22 77

+90 542 514 00 54

export@hhsotomatikkapi.com

hhsotomatikkapi.com

hhsotomatikkapi